

REVISION HISTORY			
REV	DESCRIPTION	DATE	APPROVED
G	Amendments	10/02/2020	PB
H	Additional material example	12/02/2020	PB

PROPOSED EXAMPLE MATERIALS



3inch corrugated matt black roofing sheets



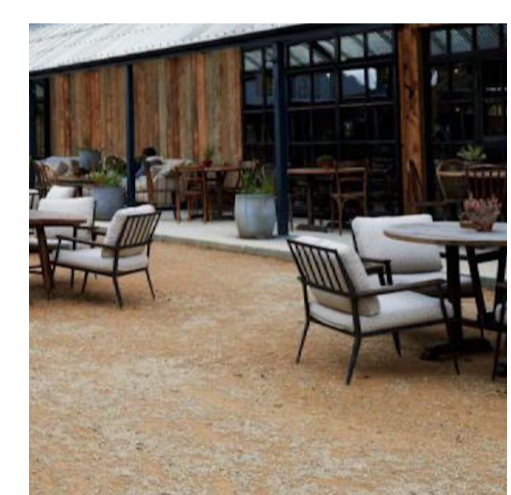
150mm vertical timber cladding boards



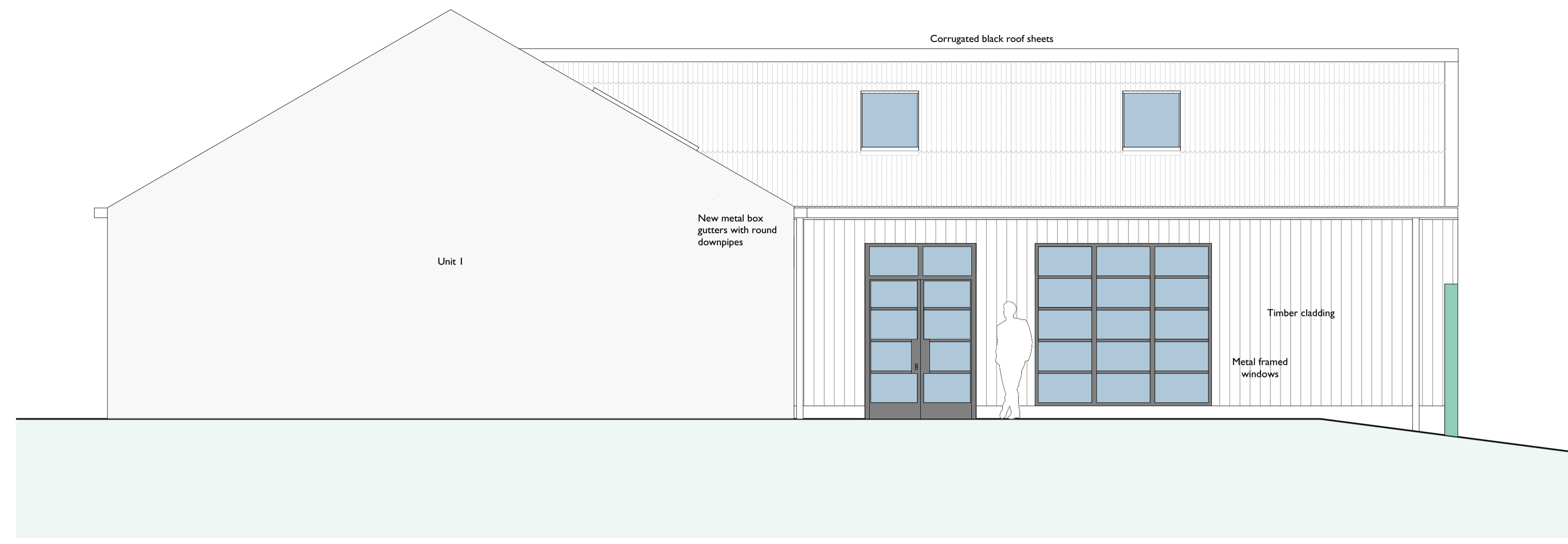
Aluminum box guttering



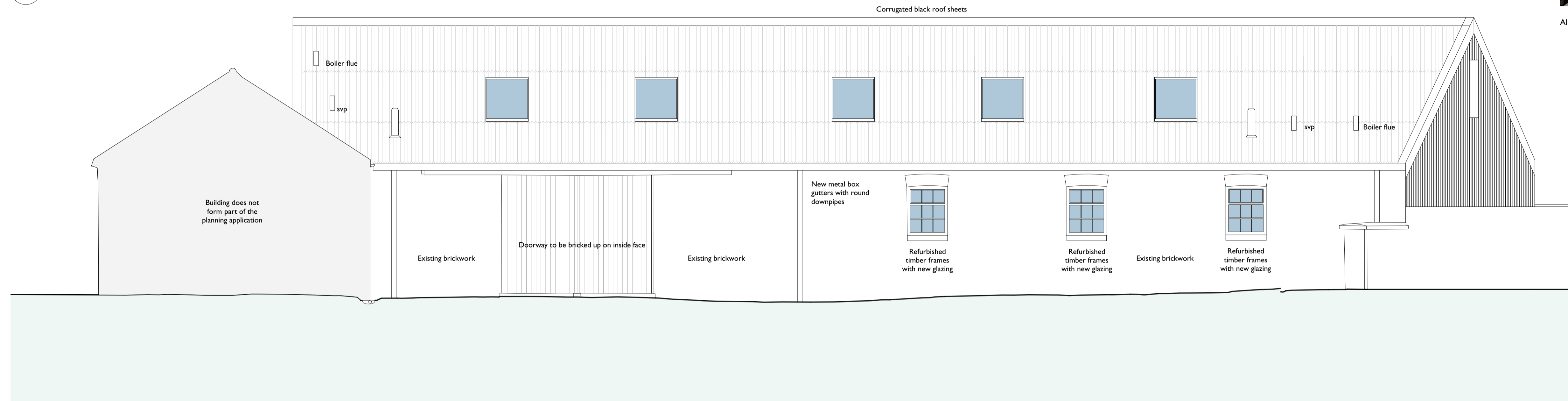
Existing brickwork



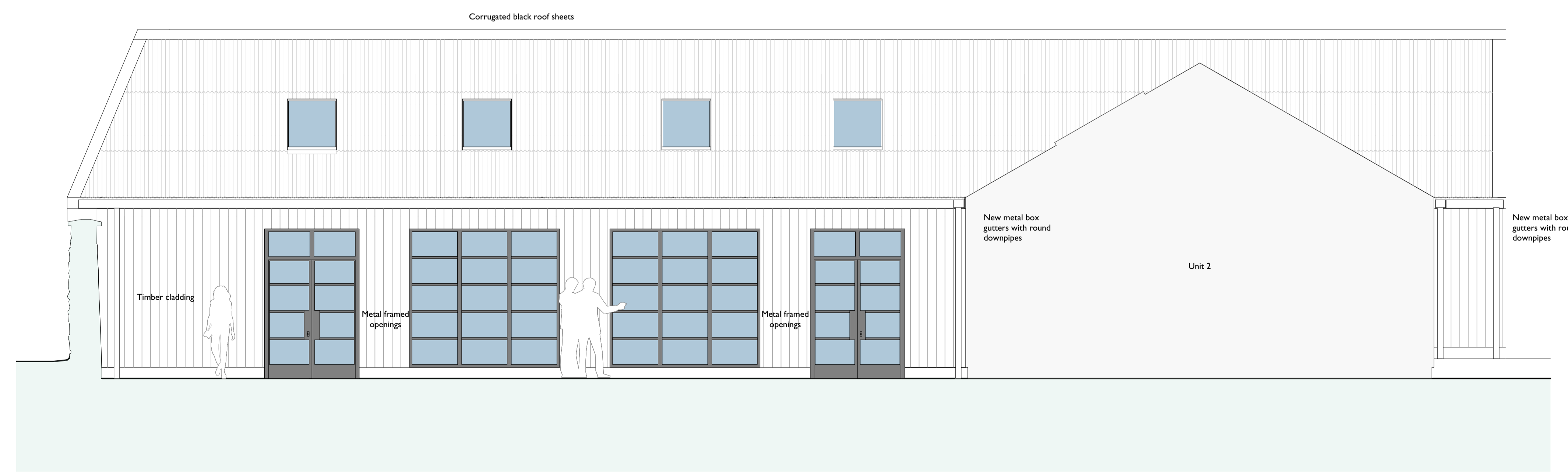
Example of combination of materials



1 SOUTH - WEST ELEVATION (YARD)
Scale: 1:50



2 NORTH - WEST ELEVATION
Scale: 1:50



3 SOUTH - EAST ELEVATION (YARD)
Scale: 1:50



NATIVE CHARTERED ARCHITECTS
The Granary, Lingcroft Farm, Fulford, York, YO19 4RE
T: 01904 656133 F: 01904 626283
E: info@nativearchitects.com www.nativearchitects.com



PLANNING

RIBA WORK STAGE 3

CLIENT: Fitzwilliam (Malton) Estate

SCALE BAR: 1:50 (0 to 250 mm), 1:50 (0 to 2.5 m)

JOB: Middlecave Farm

JOB NO.: 19037

DRAWING: Proposed Elevations

DRG NO.: 303H SCALE: 1:50 @ A1

DRAWN: PB APPROVED: DATE: 18/12/2019

The copyright in this drawing is vested in Native Chartered Architects and no license or assignment of any kind has been granted to any third party whether by provision of copies or originals of the drawing or otherwise. This drawing is not to be used without the written consent of Native Chartered Architects.
© NATIVE CHARTERED ARCHITECTS